



# Flight Plan & Site Survey

Created using **RPAS Wilco**<sup>®</sup>

Operation Name:	Tay Valley concession 5
Pilot Name:	██████████
Pilot Certificate:	██████████
Flight Start:	September 28, 2023 11:13 AM
Flight End:	September 28, 2023 1:13 PM
Flight Area (Latitude):	44° 59' 13.40" N ( 44.987 )
Flight Area (Longitude):	76° 12' 5.80" W ( -76.202 )
Altitude - Radius:	Alt: 700 ft - Rad: 740.8 m ( 0.4 nm)
Airspace:	UNCONTROLLED
FIR - Contact:	CZYZ - 905-676-4509

Please ensure you received all required authorizations prior to flight.

## Disclaimer

This Site Survey was created using RPAS Wilco by AIM Robotics. The flight plan contained is intended only for RPAS flights on the date/time and location specified. The user accepts all responsibility for the accuracy and completeness of the information contained.

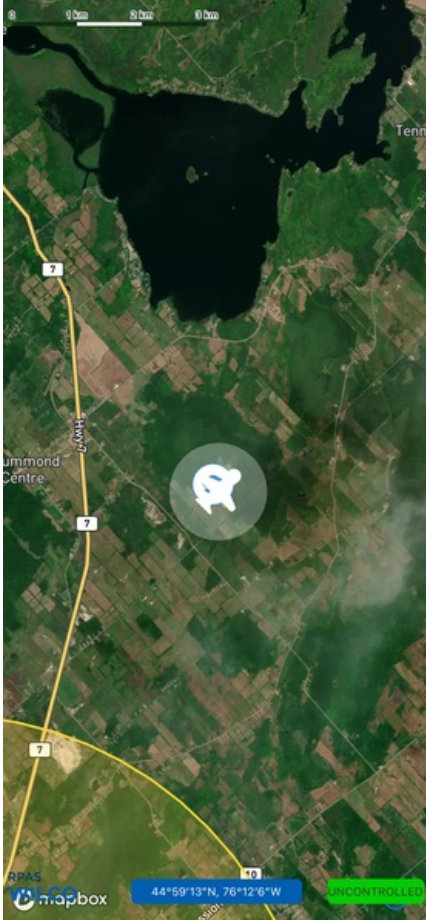
For the complete Terms & Conditions, see

<https://rpswilco.com/#/tnc>



## Included

- Site Survey
- Obstacles (if available)
- Nearby Aerodromes
- Canadian Aviation Regulations
- GFA
- Aerodrome Supplements
  - METAR & TAF (if available)
  - NOTAMS
  - CFS

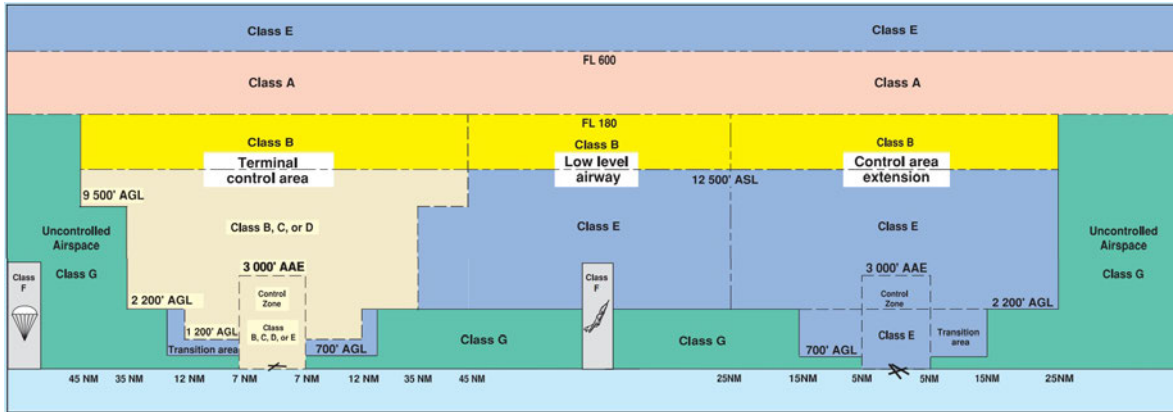
## Flight Map



## MAP Details

	Latitude	Longitude
 MODEL	44° 59' 13.40" N ( 44.987 )	76° 12' 5.80" W ( -76.202 )
 Pilot	44° 59' 17.00" N ( 44.9881 )	76° 12' 9.40" W ( -76.2026 )

## Airspace Classification



## Overlying Airspaces

Class	Name	Floor	Ceiling
E	Montreal FIR CAE	6000MSL	12500MSL
B	Montreal FIR CAE	12500MSL	18000MSL
E	Ottawa XPNDR MANDTRY	6500MSL	12500MSL
E	Ottawa, ON CAE	2500MSL	12500MSL
B	Ottawa, ON CAE	12500MSL	18000MSL
E	T749 Airway	2200AGL	12500MSL
B	T749 Airway	12500MSL	18000MSL
B	T781 Airway	12500MSL	18000MSL
E	T781 Airway	2200AGL	12500MSL

## Nearest Aerodromes & Distance from Operation

PERTH (GREAT WAR MEMORIAL HOSPITAL) (CNC9 HELIPORT Cert)	Lat: 44.907	Long: 76.253	9.777 KM	5.28 NM
CARLETON PLACE (CNR6 AERODROME Reg)	Lat: 45.104	Long: 76.123	14.396 KM	7.77 NM
SMITHS FALLS (COMMUNITY HOSPITAL) (CNS9 HELIPORT Cert)	Lat: 44.907	Long: 76.028	16.307 KM	8.81 NM

# Canadian Aviation Regulations

## Division III — General Operating and Flight Rules

For full listing please visit <https://laws-lois.justice.gc.ca/eng/regulations/SOR-96-433/FullText.html#s-901.27>

### Visual Line-of-sight

- **901.11 (1)** Subject to subsection (2) no pilot shall operate a remotely piloted aircraft system unless the pilot or a visual observer has the aircraft in visual line-of-sight at all times during flight.
- **(2)** A pilot may operate a remotely piloted aircraft system without the pilot or a visual observer having the aircraft in visual line-of-sight if the operation is conducted in accordance with a special flight operations certificate — RPAS issued under section 903.03.

### Procedures

- **901.23 (1)** No pilot shall operate a remotely piloted aircraft system unless the following procedures are established:
  - **(a)** normal operating procedures, including pre-flight, take-off, launch, approach, landing and recovery procedures; and
  - **(b)** emergency procedures, including with respect to
    - **(i)** a control station failure,
    - **(ii)** an equipment failure,
    - **(iii)** a failure of the remotely piloted aircraft,
    - **(iv)** a loss of the command and control link,
    - **(v)** a fly-away, and
    - **(vi)** flight termination.
- **(2)** If the manufacturer of the remotely piloted aircraft system provides instructions with respect to the topics referred to in paragraphs (1)(a) and (b), the procedures established under subsection (1) shall reflect those instructions.
- **(3)** No pilot shall conduct the take-off or launch of a remotely piloted aircraft unless the procedures referred to in subsection (1) are reviewed before the flight by, and are immediately available to, each crew member.
- **(4)** No pilot shall operate a remotely piloted aircraft system unless the operation is conducted in accordance with the procedures referred to in subsection (1).

### Site Survey

**901.27** No pilot shall operate a remotely piloted aircraft system unless, before commencing operations, they determine that the site for take-off, launch, landing or recovery is suitable for the proposed operation by conducting a site survey that takes into account the following factors:

- **(a)** the boundaries of the area of operation;
- **(b)** the type of airspace and the applicable regulatory requirements;
- **(c)** the altitudes and routes to be used on the approach to and departure from the area of operation;
- **(d)** the proximity of manned aircraft operations;
- **(e)** the proximity of aerodromes, airports and heliports;
- **(f)** the location and height of obstacles, including wires, masts, buildings, cell phone towers and wind turbines;
- **(g)** the predominant weather and environmental conditions for the area of operation; and
- **(h)** the horizontal distances from persons not involved in the operation.

### Operations at or in the Vicinity of an Aerodrome, Airport or Heliport

- **901.47 (1)** No pilot shall operate a remotely piloted aircraft at or near an aerodrome that is listed in the *Canada Flight Supplement* or the *Water Aerodrome Supplement* in a manner that could interfere with an aircraft operating in the established traffic pattern.
- **(2)** Subject to section 901.73 no pilot shall operate a remotely piloted aircraft at a distance of less than
  - **(a)** three nautical miles from the centre of an airport; and
  - **(b)** one nautical mile from the centre of a heliport.
- **(3)** No pilot shall operate a remotely piloted aircraft at a distance of less than three nautical miles from the centre of an aerodrome operated under the authority of the Minister of National Defence unless the operation is conducted in accordance with a special flight operations certificate — RPAS issued under section 903.03.

### Records

- **901.48 (1)** Every owner of a remotely piloted aircraft system shall keep the following records:
  - **(a)** a record containing the names of the pilots and other crew members who are involved in each flight and, in respect of the system, the time of each flight or series of flights and
  - **(b)** a record containing the particulars of any mandatory action and any other maintenance action, modification or repair performed on the system, including
    - **(i)** the names of the persons who performed them,
    - **(ii)** the dates they were undertaken,
    - **(iii)** in the case of a modification, the manufacturer, model and a description of the part or equipment installed to modify the system, and
    - **(iv)** if applicable any instructions provided to complete the work.
- **(2)** Every owner of a remotely piloted aircraft system shall ensure that the records referred to in subsection (1) are made available to the Minister on request and are retained for a period of
  - **(a)** in the case of the records referred to in paragraph (1)(a), 12 months after the day on which they are created; and
  - **(b)** in the case of the records referred to in paragraph (1)(b), 24 months after the day on which they are created.
- **(3)** Every owner of a remotely piloted aircraft system who transfers ownership of the system to another person shall, at the time of transfer, also deliver to that person all of the records referred to in paragraph (1)(b).

## ONTARIO

## AERODROME/FACILITY DIRECTORY

## PERTH (GREAT WAR MEM HOSP) ON (Heli)

CNC9

<b>REF</b>	N44 54 25 W76 15 13 Adj NE 13°W UTC-5(4) Elev 450' A1905 A5000	
<b>OPR</b>	Great War Mem Hosp 613-267-1500 Cert PPR	
<b>FLT PLN</b>		
<b>FIC</b>	Québec 866-GOMÉTÉO or 866-WXBRIEF (Toll free within Canada) or 866-541-4105 (Toll free within Canada & USA)	
<b>HELI DATA</b>	FATO/TLOF 86' dia ASPH Safety Area 114' dia Max heli overall length 57.5' Opr	
<b>RCR</b>		
<b>LIGHTING</b>	DR RY(LO) RF(FL)	
<b>PRO</b>	Arr/dep 110° fr heli, slope 8% (H3) day/night use.	

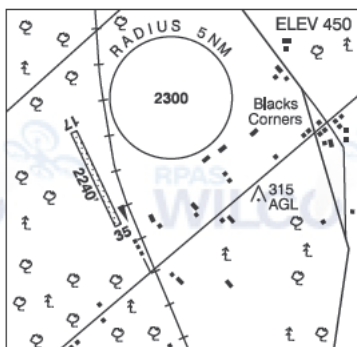
## ONTARIO

## AERODROME/FACILITY DIRECTORY

## CARLETON PLACE ON

CNR6

<b>REF</b>	N45 06 14 W76 07 24 1.5SE 14°W UTC-5(4) Elev 450' A1905 A5000
<b>OPR</b>	A & M Horton 613-285-9393 or 613-250-2206 Reg PPR
<b>PF</b>	B-1 C-2,4,5 D-3,6
<b>FLT PLN</b>	(bil)
<b>FIC</b>	Québec 866-GOMÉTÉO or 866-WXBRIEF (Toll free within Canada) or 866-541-4105 (Toll free within Canada & USA)
<b>RWY DATA</b>	Rwy 17/35 2240x95 GRASS
<b>RCR</b>	Opr No win maint.
<b>COMM</b>	
<b>ATF</b>	ffc 123.2 5NM 3500 ASL excluding the airspace that lies within Ottawa TCA class C airspace.
<b>CAUTION</b>	Rwy soft when wet and during spring thaw. Rwy strength & cond subject to season and/or climatic vars May 30-Oct 31. No prepared rwy shoulders. Dips and raised bedrock on rwy. Wildlife frequently on rwy. Ultra-light activity. Ocsi aerobic activity btwn surface & 1500'. Ocsi vehicles on rwy unannounced.



## ONTARIO

## AERODROME/FACILITY DIRECTORY

## SMITHS FALLS (COMMUNITY HOSP) ON (Heli)

CNS9

<b>REF</b>	N44 54 26 W76 01 40 Adj W 14°W UTC-5(4) Elev 409' A1905 A5000 A5002
<b>OPR</b>	Smiths Falls Community Hosp 613-283-2330 Cert PPR
<b>FLT PLN</b>	(bil)
<b>FIC</b>	Québec 866-WXBRIEF or 866-GOMÉTÉO (Toll free within Canada) or 866-541-4105 (Toll free within Canada & USA)
<b>HELI DATA</b>	FATO/TLOF 86' dia ASPH Safety Area 114' dia Max heli overall length 57.5' Opr
<b>RCR</b>	
<b>LIGHTING</b>	DR RY(LO) RF(FL)
<b>PRO</b>	Arr/dep 160° fr heli, slope 10% (H1), day/night use.

